

COUNTER TOP DISH DISPENSER

- STAINLESS STEEL
- SELF LEVELING
- FIELD ADJUSTABLE

- SINGLE, COUNTER TOP
- ENCLOSED
- HEATED

Model #: 1-DTH-C*

APPLICATION:

- “Exclusive” kitchen/dining presentations
- “Small footprint” environment where heated plates are preferred

CAPACITY:

- Approximately 25 plates

DISPENSES:

- Stackable plates
- Stackable bowls
- Misc. stackable round chinaware

SPECIFICATIONS:

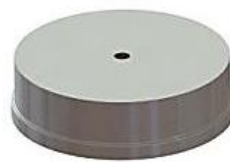
- Stainless steel; Type 304
- “Heliarc” and spot-welded construction
- Removable top
- Accommodates various round drop-in tube dispensers (DTH-DI)
- Dispensers are equipped with non-rusting springs that are heat treated for strength & durability
- Round, square or hexagon shaped exterior
- Rubber mounting feet to eliminate scratching

OPTIONAL FEATURES [1]:

- NP - Stainless steel nameplate
- TCC - Custom shaped tube cover
- Remove (*) from model code for non-NSF models

ELECTRICAL DATA:

- 120V, 60Hz, 1Ph, 200Watts
- NEMA 5-15 End Cap
- Other voltages available



Optional Tube Cover



MODEL	TUBE MODEL REFERENCE	MAXIMUM CHINAWARE DIAMETER	SHIPPING WEIGHT APP.
1-DTH-C-10.87*	DTH-DI-10.87*	10 5/8" - 270mm	30lb - 13.6kg
1-DTH-C-11.37*	DTH-DI-11.37*	11 1/8" - 283mm	35lb - 15.9kg

Other sizes available upon request.

© Copyright 2012 Hatch Industries Limited



CANADA/USA TOLL FREE: **1-800-387-6969** FAX: **1-519-822-8365** www.hatchindustries.com

211 Dawson Road, Guelph, Ontario, Canada N1H 1A3
Specifications subject to change without notice.

